



Thank you for purchasing this product.
For optimum performance and safety, please read these instructions carefully.
Please keep this manual for future reference.

Manufactured by: Panasonic Corporation
Kadoma, Osaka, Japan
Importer for Europe: Panasonic Marketing Europe GmbH
Panasonic Testing Centre
Winsbergring 15, 22525 Hamburg, Germany



Panasonic Corporation
Web Site: <http://panasonic.net>

RQT9896-1B
L0214LC1044

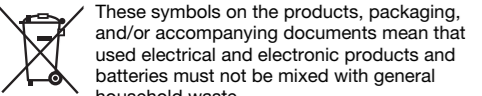
Do the procedures with the remote control. You can also use the buttons on the main unit if they are the same. Your system and the illustrations can look differently. These operating instructions are applicable to the following system.

System	SC-AKX18
Main unit	SA-AKX18
Speakers	SB-AKX18



Back of product

Disposal of Old Equipment and Batteries
Only for European Union and countries with recycling systems



These symbols on the products, packaging, and/or accompanying documents mean that used electrical and electronic products and batteries must not be mixed with general household waste.
For proper treatment, recovery and recycling of old products and used batteries, please take them to applicable collection points in accordance with your national legislation. By disposing of them correctly, you will help to save valuable resources and prevent any potential negative effects on human health and the environment.
For more information about collection and recycling, please contact your local municipality. Penalties may be applicable for incorrect disposal of this waste, in accordance with national legislation.

Note for the battery symbol (bottom symbol): This symbol might be used in combination with a chemical symbol. In this case it complies with the requirement set by the Directive for the chemical involved.

Supplied accessories

Check and identify the supplied accessories.

For the United Kingdom and Ireland
Use numbers indicated in parentheses when asking for replacement parts. (Product numbers correct as of February 2014. These may be subject to change.)

For Australia and New Zealand

1 AC mains lead

2 AC mains leads

For the United Kingdom and Ireland
(K2CT2Y00097)

For others
(K2CQ2Y000119)

1 AM loop antenna

(N1DY0Y00011)

1 FM indoor antenna

(RSAX0002)



1 Remote control battery

1 Remote control

(N2QAYB000944)

For the United Kingdom and Ireland

1 Antenna plug adaptor

(K1YZ02000013)



Sales and Support Information

For the United Kingdom and Ireland

Customer Communications Centre
• For customers within the UK: 0844 844 3339
• For customers within Ireland: 01 289 8333
• Monday – Friday 9:00am – 5:00pm
• Excluding public holidays
• For further support on your product, please visit our website: www.panasonic.co.uk

Direct Sales at Panasonic UK

- Order accessory and consumable items for your product with ease and confidence by phoning our Customer Communications Centre
Monday – Friday 9:00am – 5:00pm
(Excluding public holidays).
- Or go on line through our Internet Accessory ordering application at www.pas-europe.com.
- Most major credit and debit cards accepted.
- All enquiries transactions and distribution facilities are provided directly by Panasonic UK.
- It couldn't be simpler!
- Also available through our Internet is direct shopping for a wide range of finished products. Take a browse on our website for further details.

About Bluetooth®

Panasonic bears no responsibility for data and/or information that can possibly be compromised during a wireless transmission.

Frequency band

- This system uses the 2.4 GHz frequency band.

Certification

- This system conforms to the frequency restrictions and has received certification based on frequency laws. Thus, a wireless permit is not necessary.
- The actions below are punishable by law:
 - Taking apart or modifying the main unit.
 - Removing specification indications.

Restrictions of use

- Wireless transmission and/or usage with all Bluetooth® equipped devices is not guaranteed.
- All devices must conform to standards set by Bluetooth SIG, Inc.
- Depending on the specifications and settings of a device, it can fail to connect or some operations can be different.
- This system supports Bluetooth® security features. But depending on the operating environment and/or settings, this security is possibly not sufficient. Transmit data wirelessly to this system with caution.
- This system cannot transmit data to a Bluetooth® device.

Range of use

- Use this device at a maximum range of 10 m.
- The range can decrease depending on the environment, obstacles or interference.

Interference from other devices

- This system may not function properly and troubles such as noise and sound jumps may arise due to radio wave interference if this unit is located too close to other Bluetooth® devices or the devices that use the 2.4 GHz band.
- This system may not function properly if radio waves from a nearby broadcasting station, etc. is too strong.

Intended usage

- This system is for normal, general use only.
- Do not use this system near an equipment or in an environment that is sensitive to radio frequency interference (example: airports, hospitals, laboratories, etc.).

Licenses

The Bluetooth® word mark and logos are owned by the Bluetooth SIG, Inc. and any use of such marks by Panasonic Corporation is under license. Other trademarks and trade names are those of their respective owners.
Google Play and Android are trademarks of Google Inc.
MPEG Layer-3 audio coding technology licensed from Fraunhofer IIS and Thomson.

Caution for AC mains lead

(For the AC mains plug of three pins)

For your safety, please read the following text carefully.

This appliance is supplied with a moulded three pin mains plug for your safety and convenience.
A 5-ampere fuse is fitted in this plug.
Should the fuse need to be replaced please ensure that the replacement fuse has a rating of 5-ampere and that it is approved by ASTA or BSI to BS1362.

Check for the ASTA mark ⚡ or the BSI mark ⚡ on the body of the fuse.

If the plug contains a removable fuse cover you must ensure that it is refitted when the fuse is replaced.
If you lose the fuse cover the plug must not be used until a replacement cover is obtained.
A replacement fuse cover can be purchased from your local dealer.

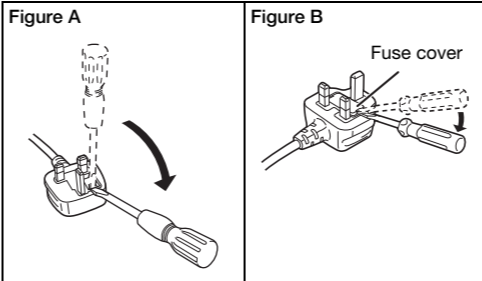
Before use

Remove the connector cover.

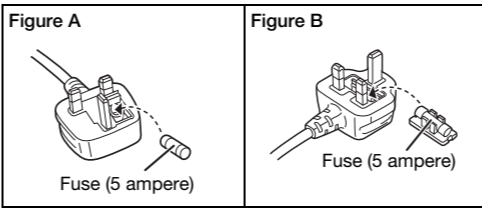
How to replace the fuse

The location of the fuse differ according to the type of AC mains plug (figures A and B). Confirm the AC mains plug fitted and follow the instructions below.
Illustrations may differ from actual AC mains plug.

1. Open the fuse cover with a screwdriver.



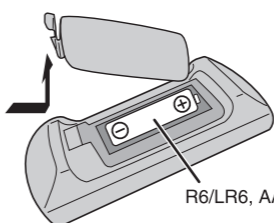
2. Replace the fuse and close or attach the fuse cover.



Maintenance

To clean this system, wipe with a soft, dry cloth.
• Never use alcohol, paint thinner or benzine to clean this system.
• Before using chemically treated cloth, read the instructions that came with the cloth carefully.

Preparing the remote control



Use alkaline or manganese battery.

Install the battery so that the poles (+ and –) align with those in the remote control.

Placement of speakers



The left and right speakers are the same.
You cannot remove the net of the speakers.

Use only the supplied speakers.

You can cause damage to the system and decrease the sound quality if you use other speakers.

Note:

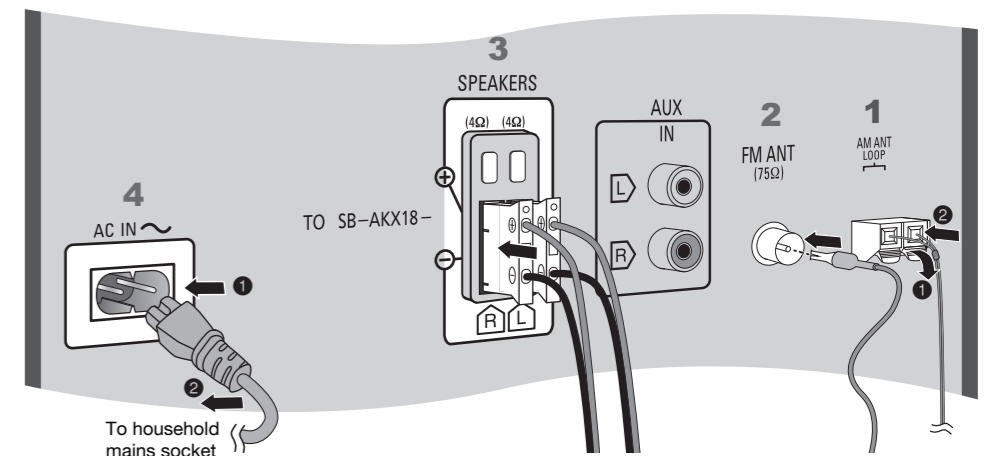
- Keep your speakers more than 10 mm from the main unit for ventilation.
- Put the speakers on a flat safe surface.
- These speakers do not have magnetic shielding. Do not put them near TVs, PCs or other equipment easily influenced by magnetism.
- When you play at high levels for a long period, it can cause damage to the speakers and decrease the life of the speakers.
- Decrease the volume in these conditions to prevent damage:
 - When the sound is distorted.
 - When you adjust the sound quality.

CAUTION!

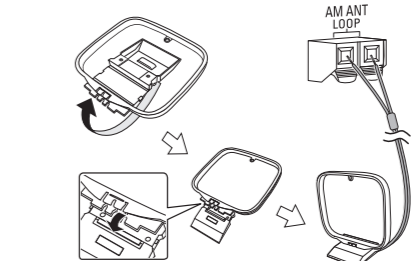
- Use the speakers only with the recommended system. If not, you can cause damage to the amplifier and speakers and can cause a fire. Consult an approved service personnel if damage occurs or if there is a sudden apparent change in performance.
- Do the procedures included in these instructions when you attach the speakers.

Making the connections

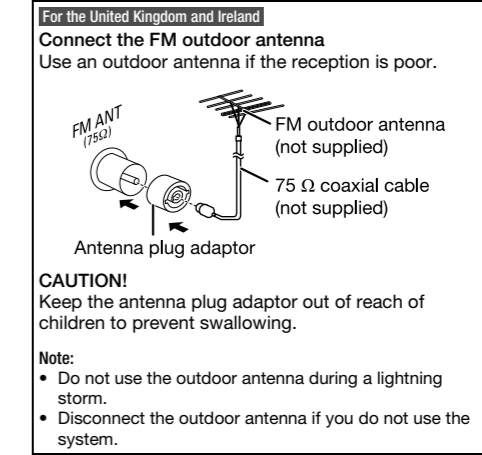
Connect the AC mains lead only after all the other connections have been made.



1 Connect the AM loop antenna.
Stand the antenna up on its base until it clicks.



2 Connect the FM indoor antenna.
Put the antenna where reception is best.



3 Connect the speakers.
4 Connect the AC mains lead.

(For the AC mains plug of three pins)
READ THE "Caution for AC mains lead" BEFORE CONNECTION.

Do not use an AC mains lead from other equipment.

Conserving power
The system consumes a small amount of power even when it is in standby mode. Disconnect the power supply if you do not use the system.
Some settings will be lost after you disconnect the system. You have to set them again.

CE1177

Declaration of Conformity (DoC)

Hereby, "Panasonic Corporation" declares that this product is in compliance with the essential requirements and other relevant provisions of Directive 1999/5/EC.

Customers can download a copy of the original DoC to the R&TTE products from our DoC Server:

<http://www.doc.panasonic.de>

Contact to Authorised Representative:

Panasonic Marketing Europe GmbH,

Panasonic Testing Centre, Winsbergring 15, 22525 Hamburg, Germany

This product is intended for general consumer. (Category 3)

Lietuviškai

Atitikties deklaracija (AD)

Bendrovė "Panasonic Corporation" patvirtina, kad šis gaminytis tenkina direktyvos 1999/5/EB esminius reikalavimus ir kitas taikytinas nuostatas.

Mūsų R&TTE gaminių originalios atitikties deklaracijos kopiją klientai gali atsisiųsti iš mūsų AD serverio:

<http://www.doc.panasonic.de>

Įgaliojoto atstovo adresas:

"Panasonic Marketing Europe GmbH",

Panasonic Testing Centre, Winsbergring 15, 22525 Hamburg, Vokietija.

Šis gaminytis skirtas bendrajai vartojimui. (3 kategorija)

Slovensky

Vyhlašenie o zhode (DoC)

"Panasonic Corporation" týmto prehlasuje, že tento výrobok je v zhode so základnými požiadavkami a ďalšími príslušnými ustanoveniami smernice 1999/5/ES.

Zákazníci si môžu stiahnuť kópiu pôvodného DoC na naše R&TTE výrobky z nášho servera DoC:

<http://www.doc.panasonic.de>

Kontakt na spoločného zástupcu:

Panasonic Marketing Europe GmbH,

Panasonic Testing Centre, Winsbergring 15, 22525 Hamburg, Nemecko

Tento produkt je určený pre všeobecného spotrebiteľa. (Kategorija 3)

Slovensko

Izjava o skladnosti (DoC)

S príslušnú izjavu podjedťe "Panasonic Corporation" izjavija, da so svoji izdelki skladni s poglavitnimi zahtevami in drugimi odgovarjajočimi predpisi direktive 1999/5/ES.

Stranka lahko naloži izvod izvirnega DoC o naših izdelkih R&TTE s strežnika DoC:

<http://www.doc.panasonic.de>

Pooblaščen zastopnik: Panasonic Marketing Europe GmbH, Panasonic Testing Centre, Winsbergring 15, 22525 Hamburg, Nemčija

Izdelek je namenjen splošni uporabi. (Razred 3)

Norsk

Samsvarserklæring (DoC)

"Panasonic Corporation" erklærer at utstyret er i samsvar med de grunnleggende krav og øvrige relevante krav i direktiv 1999/5/EF.

Kundene kan laste ned en kopi av den originale samsvarserklæringen (DoC) for vårt R&TTE utstyr fra vår DoC server:

<http://www.doc.panasonic.de>

Kontakt vår autoriserte representant:

Panasonic Marketing Europe GmbH,

Panasonic Testing Centre, Winsbergring 15, 22525 Hamburg, Tyskland

Utstyret er beregnet på den vanlige forbruker. (Klasse 3)

Eesti keel

Vastavusdeklaratsioon (DoC)

"Panasonic Corporation" kinnitab kaesolevaga, et see toode on vastavuses põhiliste nõuete ja muude direktiivi 1999/5/EÜ asjakohaste sätetega.

Kliendid saavad koopia meie R&TTE toodetele kehtiva originaalvastavusdeklaratsiooni kopia alla laadida meie DoC serverist:

<http://www.doc.panasonic.de>

Võite ühendust võtta meie esindajaga:

Panasonic Marketing Europe GmbH,

Panasonic Testing Centre, Winsbergring 15, 22525 Hamburg, Germany

See toode on mõeldud tavakasutajale. (III kategooria)

Български

Декларация за съответствие (DoC)

"Panasonic Corporation" декларира, че този продукт съответства на съществени изисквания и другите приложими разпоредби на Директива 1999/5/ЕО.

Потребителите могат да свалят копие от оригиналните DoC към нашите продукти от тиа R&TTE от сървъра, на който се съхранява DoC:

<http://www.doc.panasonic.de>

За контакт с оторизиран представител: Panasonic Marketing Europe GmbH, Panasonic Testing Centre, Winsbergring 15, 22525 Hamburg, Германия

Този продукт е предназначен за обща употреба. (Категория 3)

Магyar

Megfelelősségi Nyilatkozat (DoC)

Ezenmel a "Panasonic Corporation" kijelenti, hogy a jelen termék kielégíti az 1999/5/EK irányelv létfeltesságú követelményeit és más vonatkozó rendelkezéseit.

A vásárlók letölthetik az R&TTE termékek eredeti DoC másolatát a DoC szerverünkről:

<http://www.doc.panasonic.de>

Kérjük a hivatalos márkaképviselethez: Panasonic Marketing Europe GmbH, Panasonic Testing Centre, Winsbergring 15, 22525 Hamburg, Németország

A termék letöltésén fogyasztóknak szánták. (3-as kategória)

Magyar

Megfelelősségi Nyilatkozat (DoC)

Ezenmel a "Panasonic Corporation" kijelenti, hogy a jelen termék kielégíti az 1999/5/EK irányelv létfeltesságú követelményeit és más vonatkozó rendelkezéseit.

A vásárlók letölthetik az R&TTE termékek eredeti DoC másolatát a DoC szerverünkről:

<http://www.doc.panasonic.de>

Kérjük a hivatalos márkaképviselethez: Panasonic Marketing Europe GmbH, Panasonic Testing Centre, Winsbergring 15, 22525 Hamburg, Németország

A termék letöltésén fogyasztóknak szánták. (3-as kategória)

Български

Декларация за съответствие (DoC)

"Panasonic Corporation" декларира, че този продукт съответства на съществени изисквания и другите приложими разпоредби на Директива 1999/5/ЕО.

Потребителите могат да свалят копие от оригиналните DoC към нашите продукти от тиа R&TTE от сървъра, на който се съхранява DoC:

<http://www.doc.panasonic.de>

За контакт с оторизиран представител: Panasonic Marketing Europe GmbH, Panasonic Testing Centre, Winsbergring 15, 22525 Hamburg, Германия

Този продукт е предназначен за обща употреба. (Категория 3)

Български

Декларация за съответствие (DoC)

"Panasonic Corporation" декларира, че този продукт съответства на съществени изисквания и другите приложими разпоредби на Директива 1999/5/ЕО.

Потребителите могат да свалят копие от оригиналните DoC към нашите продукти от тиа R&TTE от сървъра, на който се съхранява DoC:

<http://www.doc.panasonic.de>

За контакт с оторизиран представител: Panasonic Marketing Europe GmbH, Panasonic Testing Centre, Winsbergring 15, 22525 Hamburg, Германия

Този продукт е предназначен за обща употреба. (Категория 3)

Български

Декларация за съответствие (DoC)

"Panasonic Corporation" декларира, че този продукт съответства на съществени изисквания и другите приложими разпоредби на Директива 1999/5/ЕО.

Потребителите могат да свалят копие от оригиналните DoC към нашите продукти от тиа R&TTE от сървъра, на който се съхранява DoC:

<http://www.doc.panasonic.de>

За контакт с оторизиран представител: Panasonic Marketing Europe GmbH, Panasonic Testing Centre, Winsbergring 15, 22525 Hamburg, Германия

Този продукт е предназначен за обща употреба. (Категория 3)

Български

Декларация за съответствие (DoC)

"Panasonic Corporation" декларира, че този продукт съответства на съществени изисквания и другите приложими разпоредби на Директива 1999/5/ЕО.

Потребителите могат да свалят копие от оригиналните DoC към нашите продукти от тиа R&TTE от сървъра, на който се съхранява DoC:

<http://www.doc.panasonic.de>

За контакт с оторизиран представител: Panasonic Marketing Europe GmbH, Panasonic Testing Centre, Winsbergring 15, 22525 Hamburg, Германия

Този продукт е предназначен за обща употреба. (Категория 3)

Български

Декларация за съответствие (DoC)

"Panasonic Corporation" декларира, че този продукт съответства на съществени изисквания и другите приложими разпоредби на Директива 1999/5/ЕО.

Потребителите могат да свалят копие от оригиналните DoC към нашите продукти от тиа R&TTE от сървъра, на който се съхранява DoC:

<http://www.doc.panasonic.de>

За контакт с оторизиран представител: Panasonic Marketing Europe GmbH, Panasonic Testing Centre, Winsbergring 15, 22525 Hamburg, Германия

Този продукт е предназначен за обща употреба. (Категория 3)

Български

Декларация за съответствие (DoC)

"Panasonic Corporation" декларира, че този продукт съответства на съществени изисквания и другите приложими разпоредби на Директива 1999/5/ЕО.

Потребителите могат да свалят копие от оригиналните DoC към нашите продукти от тиа R&TTE от сървъра, на който се съхранява DoC:

<http://www.doc.panasonic.de>

За контакт с оторизиран представител: Panasonic Marketing Europe GmbH, Panasonic Testing Centre, Winsbergring 15, 22525 Hamburg, Германия

Този продукт е предназначен за обща употреба. (Категория 3)

Български

Декларация за съответствие (DoC)

"Panasonic Corporation" декларира, че този продукт съответства на съществени изисквания и другите приложими разпоредби на Директива 1999/5/ЕО.

Потребителите могат да свалят копие от оригиналните DoC към нашите продукти от тиа R&TTE от сървъра, на който се съхранява DoC:

<http://www.doc.panasonic.de>

За контакт с оторизиран представител: Panasonic Marketing Europe GmbH, Panasonic Testing Centre, Winsbergring 15, 22525 Hamburg, Германия

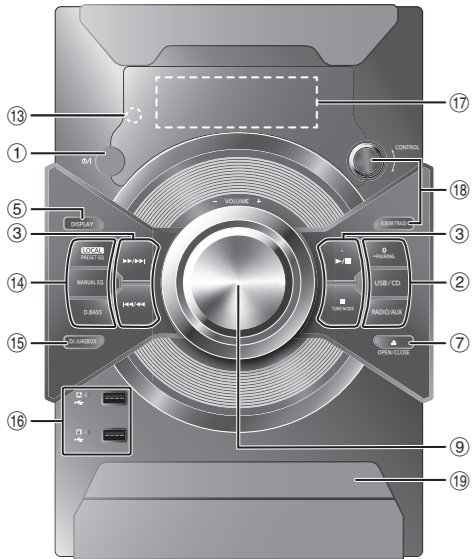
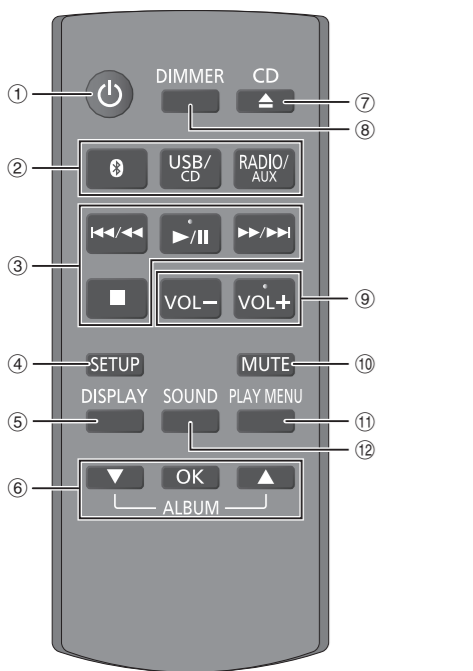
Този продукт е предназначен за обща употреба. (Категория 3)

Limited Warranty (Australia)

Panasonic Warranty

- The product is warranted for 12 months from the date of purchase. Subject to the conditions

Overview of controls



Radio

Preparation

Press [RADIO/AUX] to select “FM” or “AM”.

Manual tuning

- Press [PLAY MENU] to select “TUNE MODE”.
- Press [▲, ▼] to select “MANUAL” and then press [OK].
- Press [◀◀/▶▶] or [▶▶/▶▶] to tune in to the station. To tune automatically, press and hold the button until the frequency starts changing quickly. “STEREO” is shown when a stereo broadcast is being received.

Using the main unit

- Press [TUNE MODE] to select “MANUAL”.
- Press [◀◀/▶▶] or [▶▶/▶▶] to tune in to the station.

Memory presetting

You can preset up to 30 FM and 15 AM stations.

Automatic presetting

- Press [PLAY MENU] to select “A.PRESET”.
 - Press [▲, ▼] to select “LOWEST” or “CURRENT” and then press [OK]. The tuner presets all the stations it can receive into the channels in ascending order. To cancel, press [■].
- | | |
|---------|---|
| LOWEST | Tuning begins from the lowest frequency. |
| CURRENT | Tuning begins from the current frequency. |

Manual presetting

- Press [PLAY MENU] to select “TUNE MODE”.
- Press [▲, ▼] to select “MANUAL” and then press [OK].
- Press [◀◀/▶▶] or [▶▶/▶▶] to tune in to the station.
- Press [OK].
- Press [▲, ▼] to select a preset number and then press [OK]. Do steps 3 through 5 again to preset more stations. The new station replaces any station that occupies the same preset number.

Selecting a preset station

- Press [PLAY MENU] to select “TUNE MODE”.
- Press [▲, ▼] to select “PRESET” and then press [OK].
- Press [◀◀/▶▶] or [▶▶/▶▶] to select the preset station.

Using the main unit

- Press [TUNE MODE] to select “PRESET”.
- Press [◀◀/▶▶] or [▶▶/▶▶] to select the preset station.

- Standby/on switch [⏻, ⏻/⏻] Press to switch the unit from on to standby mode or vice versa. In standby mode, the unit is still consuming a small amount of power.
- Select the audio source** On the main unit: To start Bluetooth® pairing, press and hold [Ⓚ –PAIRING] when you are in Bluetooth® source.
- Basic playback control
- View the setup menu
- View the content information
- Select or confirm the option
- Open or close the disc tray
- Decrease the brightness of the display panel** To cancel, press the button again.
- Adjust the volume level
- Mute the sound** To cancel, press the button again. “MUTE” is also cancelled when you adjust the volume or when you switch off the system.

- View the play menu
- Select the sound effects
- Remote control sensor Distance: Within approximately 7 m Angle: Approximately 20° up and down, 30° left and right
- Select the sound effects
- Select the DJ jukebox
- USB A USB B USB port (–) USB status indicator
- Display panel
- Select MP3 album or track** Press [ALBUM/TRACK] to select album or track. **Browse track or albums** Turn [CONTROL] to browse. To start playback from the selection, press [▶/II].
- Disc tray

Improving the sound quality

When “FM” is selected

- Press [PLAY MENU] to select “FM MODE”.
- Press [▲, ▼] to select “MONO” and then press [OK]. To cancel, select “STEREO”. “MONO” is also cancelled when you change the frequency.

To memorise the setting

Continue with step 4 of “Manual presetting”.

Checking the signal status

When “FM” is selected

For Australia and New Zealand

Press [DISPLAY].

For other

Press [PLAY MENU] to select “FM STATUS” and then press [OK].

FM	The FM signal is in monaural. The system is not tuned in to a station.
FM ST	The FM signal is in stereo.
FM MONO	“MONO” is selected as the “FM MODE”.

RDS broadcasting

Except for Australia and New Zealand

This system can show the text data transmitted by the radio data system (RDS) available in some areas.

Press [DISPLAY].

PS	Programme service
PTY	Programme type
FREQ	Frequency

Note:
RDS may not be available if reception is poor.

AM allocation setting

By main unit only

This system can also receive AM broadcasts allocated in 10 kHz steps.

- Press [RADIO/AUX] to select “AM”.
- Press and hold [RADIO/AUX].

After a few seconds, the display panel shows the current minimum radio frequency. Release the button when the minimum frequency changes.

- To go back to the initial setting, do the above steps again.
- Preset frequencies are erased after you change the setting.

Preparing the media

Disc

- Press [USB/CD] to select “CD”.
- Press [CD ▲] (main unit: [▲ OPEN/CLOSE]) to open the disc tray. Put in a disc with the label facing up.



USB

Preparation
Before you connect a USB device to the system, make sure you do a backup of the data.



- Decrease the volume and connect the USB device to the USB port.** Hold the main unit when connecting or disconnecting the USB device.
- Press [USB/CD] to select “USB A” or “USB B”.

Note:
Do not use a USB extension cable. The system cannot recognise USB device connected through a cable.

Bluetooth®

You can connect and play an audio device wirelessly through Bluetooth®.

Preparation

- Switch on the Bluetooth® feature of the device and put the device near the system.
- Read the operating instructions of the device for details.

Pairing a device

Preparation

If this system is connected to a Bluetooth® device, disconnect it (➡ “Disconnecting a device”).

- Press [Ⓚ]. If “PAIRING” is shown, continue with step 4.
- Press [PLAY MENU] to select “PAIRING”. Or press and hold [Ⓚ –PAIRING] on the main unit until “PAIRING” is shown. Continue with step 4.
- Press [▲, ▼] to select “OK? YES” and then press [OK]. “PAIRING” is shown. To cancel, select “OK? NO”.
- Select “SC-AKX18” from the Bluetooth® menu of the device. If prompted for a passkey, input “0000”. The device connects with this system automatically after pairing is complete. The name of the connected device is shown for a few seconds.

Note:

You can pair up to 8 devices with this system. If a 9th device is paired, the device that has not been used for the longest time will be replaced.

Connecting a device

Preparation
If this system is connected to a Bluetooth® device, disconnect it (➡ “Disconnecting a device”).

- Press [Ⓚ]. “BLUETOOTH READY” is shown.
- Select “SC-AKX18” from the Bluetooth® menu of the device. The name of the connected device is shown for a few seconds.
- Start playback on the device.

Note:

- A device must be paired to connect.
- The system can only connect to one device at a time.
- When “BLUETOOTH” is selected as the source, this system will automatically try to connect to the last connected device.

Disconnecting a device

- Press [Ⓚ].
- Press [PLAY MENU] to select “DISCONNECT?”.
- Press [▲, ▼] to select “OK? YES” and then press [OK]. “BLUETOOTH READY” is shown. To cancel, select “OK? NO”.

Using the main unit

Press and hold [Ⓚ –PAIRING] until “PAIRING” is shown.

Note:

A device is disconnected when you:

- Select a different source.
- Move the device out of the maximum range.
- Disable the Bluetooth® transmission of the device.
- Switch off the system or the device.

Media playback

The following marks indicate the availability of the feature.

CD	CD-R/RW in CD-DA format or with MP3 files.
USB	USB device with MP3 files.
BLUETOOTH	Bluetooth® device.

Basic playback

Play	Press [▶/II].
Stop	Press [■]. USB The position is memorised. “RESUME” is shown. Press again to stop fully.
Pause	Press [▶/II]. Press again to continue playback.
Skip	Press [◀◀/▶▶] or [▶▶/▶▶] to skip track. CD USB Press [▲, ▼] to skip MP3 album.
Search	Press and hold [◀◀/▶▶] or [▶▶/▶▶].

Note:

Depending on the Bluetooth® device, some operations may not work.

Viewing available information

CD USB BLUETOOTH

You can view the available information on the display panel.

Press [DISPLAY].

Note:

- Maximum characters that can be shown:
CD USB: approximately 32
BLUETOOTH: approximately 16
- This system supports ver. 1.0 and 1.1 ID3 tags.
- Text data that the system does not support can show differently.
- Example: MP3 album and track number display.

Album number	Track number
--------------	--------------

Album number	Track number
--------------	--------------

Album number	Track number
--------------	--------------

Album number	Track number
--------------	--------------

Album number	Track number
--------------	--------------

Album number	Track number
--------------	--------------

Others

Auto off

This system automatically switches off when you do not use it for approximately 20 minutes.

- Press [SETUP] to select “AUTO OFF”.
- Press [▲, ▼] to select “ON” and then press [OK]. “A.OFF” is shown. To cancel, select “OFF”.

Note:

This function does not work when you are in radio source or when a Bluetooth® device is connected.

Bluetooth® standby

This function automatically switches on the system when you establish a Bluetooth® connection from a paired device.

- Press [SETUP] to select “BLUETOOTH STANDBY”.
- Press [▲, ▼] to select “ON” and then press [OK]. To cancel, select “OFF”.

Software version

You can check the software version of the system.

- Press [SETUP] to select “SW VER.” and then press [OK]. The software version is shown.
- Press [OK] again to exit.

Troubleshooting

Before requesting service, make the following checks. If you are in doubt about some of the check points, or if the solutions indicated do not solve the problem, consult your dealer for instructions.

Common problems

The unit does not work.

- The safety device has been activated. Do the following:
 - Press [⏻] on the main unit to switch the unit to standby mode. If the unit does not switch to standby mode, – Press and hold the button for a minimum of 10 seconds. Or, – Disconnect the AC mains lead and connect it again.
 - Press [⏻] again to switch on the unit. If the problem persists, consult your dealer.

The display panel lights up and changes continuously in standby mode.

- Press and hold [■] on the main unit to select “DEMO OFF”.

No operations can be done with the remote control.

- Examine that the battery is installed correctly.

Play menu

CD USB

- Press [PLAY MENU] to select “PLAYMODE” or “REPEAT”.
- Press [▲, ▼] to select the setting and then press [OK].

PLAYMODE	
OFF	Cancel the setting.
PLAYMODE	
1-TRACK	Play one selected track. Press [◀◀/▶▶] or [▶▶/▶▶] to select the track.
1-ALBUM	Play one selected MP3 album.
1ALBUM	Press [▲, ▼] to select the MP3 album.
RANDOM	Play all tracks randomly.
1-ALBUM	Play all tracks in one selected MP3 album randomly.
1ALBUM RND	Press [▲, ▼] to select the MP3 album.
REPEAT	
OFF REPEAT	Cancel the setting.
ON REPEAT	Repeat playback.

Note:

- During random playback, you cannot skip to tracks which have been played.
- The setting is cancelled when you open the disc tray.

Link mode

BLUETOOTH

You can change the link mode to suit the connection type.

Preparation

If this system is connected to a Bluetooth® device, disconnect it (➡ “Disconnecting a device”).

- Press [PLAY MENU] to select “LINK MODE”.
- Press [▲, ▼] to select the setting and then press [OK].

MODE 1	Emphasis on connectivity.
MODE 2	Emphasis on sound quality.

Note:

- The default setting is “MODE 2”.
- Select “MODE 1” if the sound is interrupted.

Note on disc

- This system can play CD-R/RW with CD-DA or MP3 format content.
- Before playback, finalise the disc on the device it was recorded on.
- Some CD-R/RW cannot be played because of the condition of the recording.

Note on USB device

- This system supports USB 2.0 full speed.
- This system can support USB devices of up to 32 GB.
- Only FAT 12/16/32 file system is supported.

Note on MP3 file

- Files are defined as tracks and folders are defined as albums.
- Tracks must have the extension “.mp3” or “.MP3”.
- Tracks will not necessarily be played in the order you recorded them.
- Some files can fail to work because of the sector size.

MP3 file on disc

- This system can access up to:
 - 255 albums (including root folder)
 - 999 tracks
 - 20 sessions
- Disc must conform to ISO9660 level 1 or 2 (except for extended formats).

MP3 file on USB device

- This system can access up to:
 - 800 albums (including root folder)
 - 8000 tracks
 - 999 tracks in one album

Sound effects

- Press [SOUND] to select the sound effect.
- Press [▲, ▼] to select the setting and then press [OK].

PRESET EQ	Select the desired preset EQ setting. Using the main unit Press [LOCAL PRESET EQ].
BASS	–4 to +4
MID	Using the main unit 1. Press [MANUAL EQ] to select “BASS”, “MID” or “TREBLE”. 2. Press [◀◀/▶▶] or [▶▶/▶▶] to adjust the level.
TREBLE	
D.BASS	“ON D.BASS” or “OFF D.BASS” Using the main unit Press [D.BASS].
SURROUND	“ON SURROUND” or “OFF SURROUND”

Note:

The default setting is underlined. Changed settings will be kept until it is changed again, unless otherwise indicated.

DJ jukebox

USB

You can use DJ jukebox to add cross-fading effect between songs. You can also use additional features with the “Panasonic MAX Juke” app (➡ see below).

- Press [PLAY MENU] to select “JUKEBOX” and then press [▲, ▼] to select the setting. Or press [DJ JUKEBOX] on the main unit to select the setting. Continue with step 3.

OFF CROSS FADE	Cancel cross-fading.
ON CROSS FADE	Add cross-fading.
OFF	Switch off DJ jukebox.

- Press [OK].

- Press [PLAY MENU] to select “PLAYMODE”.

- Press [▲, ▼] to select the setting and then press [OK].

RANDOM REPEAT	Play all tracks randomly and repeat all tracks.
RND	
ALL TITLE REPEAT	Repeat all tracks.
○	

Note:

DJ jukebox effect is cancelled when you switch off the system or change to another source.

Using the “Panasonic MAX Juke” app
You can download and install the free Android™ app “Panasonic MAX Juke” on Google Play™ for additional features, such as to request song playback from multiple devices simultaneously.

“TEMP NG”

- The temperature protection circuit has been activated, and the system will switch off. Let the unit cool down before switching it on again.
- Check that the ventilation opening of the unit is not obstructed.
- Ensure this unit is well ventilated.

“USB OVER CURRENT ERROR”

- The USB device is using too much power. Disconnect the USB device, switch off the system and then switch on again.

“VBR–”

- The system cannot show the remaining play time for variable bit rate (VBR) tracks.

Remote control code

When other Panasonic equipment responds to the remote control of this system, change the remote control code for this system.

Preparation

Press [USB/CD] to select “CD”.

To set the code to “REMOTE 2”

- Press and hold [USB/CD] on the main unit and [RADIO/AUX] on the remote control until “REMOTE 2” is shown.

- Press and hold [OK] and [USB/CD] for a minimum of 4 seconds.

To set the code to “REMOTE 1”

- Press and hold [USB/CD] on the main unit and [USB/CD] on the remote control until “REMOTE 1” is shown.

- Press and hold [OK] and [Ⓚ] for a minimum of 4 seconds.

System memory reset

Reset the memory when the following situations occur:

- There is no response when buttons are pressed.
- You want to clear and reset the memory contents.

- Disconnect the AC mains lead.

- While you press and hold [⏻] on the main unit, connect the AC mains lead again. Continue to press and hold the button until “-----” is shown.

- Release [⏻]. All the settings are set back to the factory preset. It is necessary to set the memory items again.